

**Worldwave**  
International

**100 X**  
**300mm**

**OS20**  
ceramic style

The  
**Workshop**  
FACTORY

"The Workshop Factory" intenta plasmar en cada una de sus piezas cerámicas una gran cantidad de diseños, tendencias, colores y gráficas. Todas ellas nacidas del propio diseño interno o del diseño adquirido externamente tanto de grandes diseñadores como de los pequeños artesanos prácticamente desconocidos. Intentando siempre que nuestra cerámica sea la principal protagonista de todos y cada uno de nuestros eventos, presentaciones y colecciones.

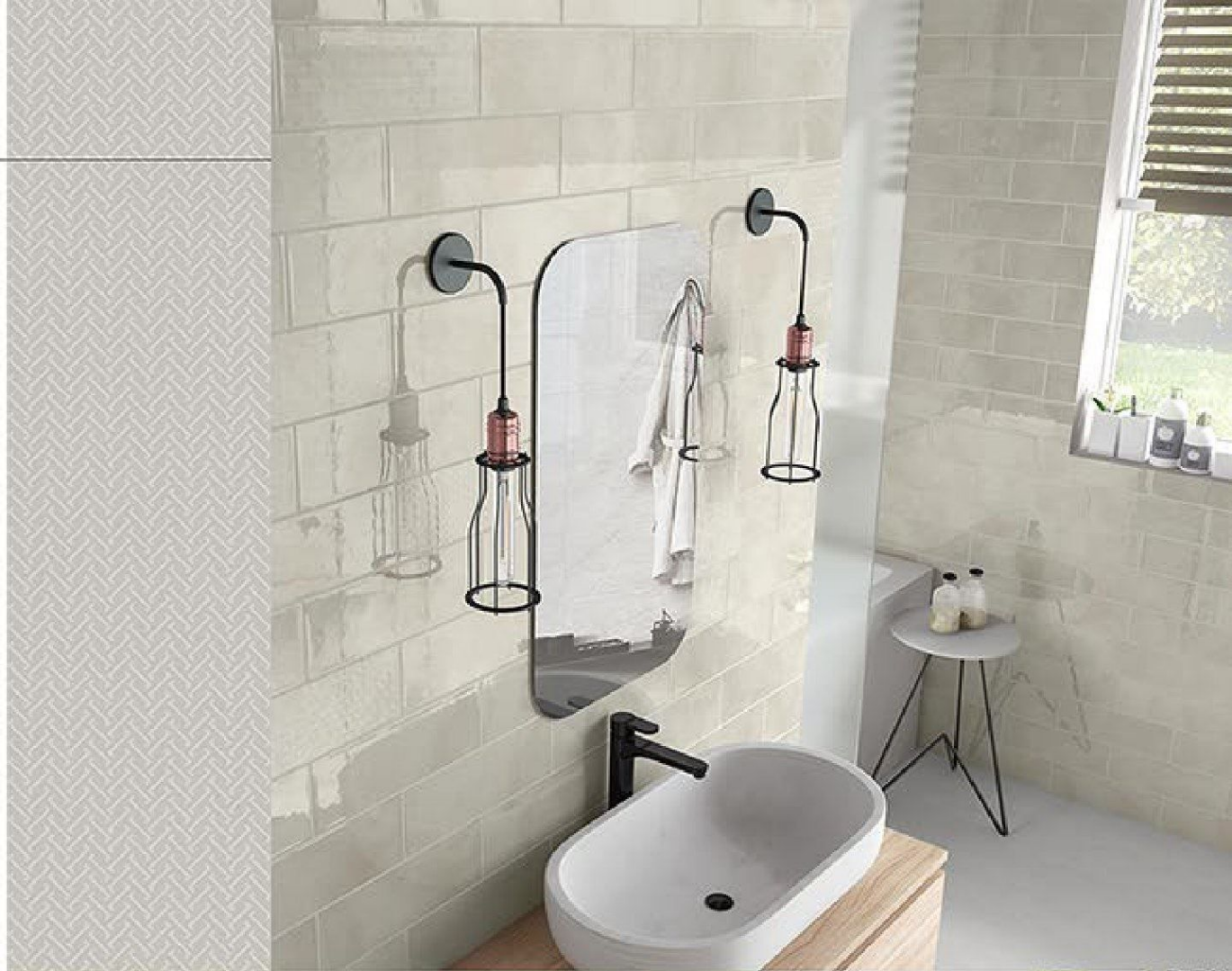
Llamar la atención con lo que mejor sabemos hacer, plasmar en cerámica todas las ideas y tendencias detectadas y desarrolladas. Y todo ello con la mejor presentación y puesta en escena que somos capaces de desarrollar para mostrar nuestros fabricados cerámicos. Nuestro diseño es nuestra cerámica, nuestro diseño es nuestra única marca, siempre poniendo a prueba nuestra capacidad para dibujar el futuro.

"The Workshop Factory" always tries to translate into its own ceramic pieces a great quantity of Original Designs, Trends, Colours and graphics. These are brought by our Design Lab, Great Designers or even Local Craftmen from all over the world. Our Tiles are definitely the main character in our events, presentations and collections.

Catching Your Eye is what we do best, with translating into ceramic all the Trends that have been previously detected and properly developed. And all this with the best presentation and staging we can offer. Our design is our Tile, our Design is our one and only Brand, always testing our ability to draw the future.

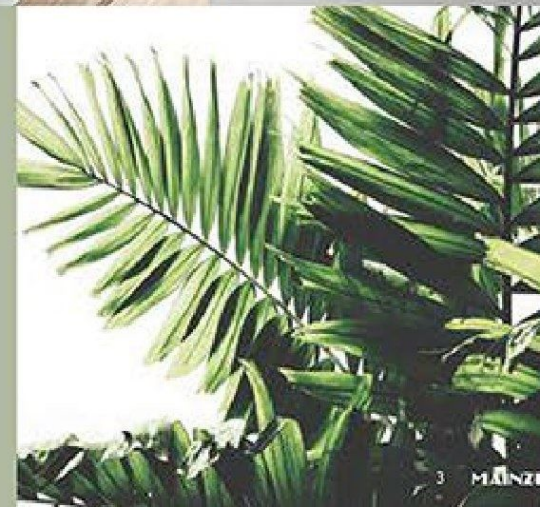
COLLECTION  
**Rome**  
100X300mm

# TRADITION INNOVATION



Autorización  
Ambiental  
Integrada.

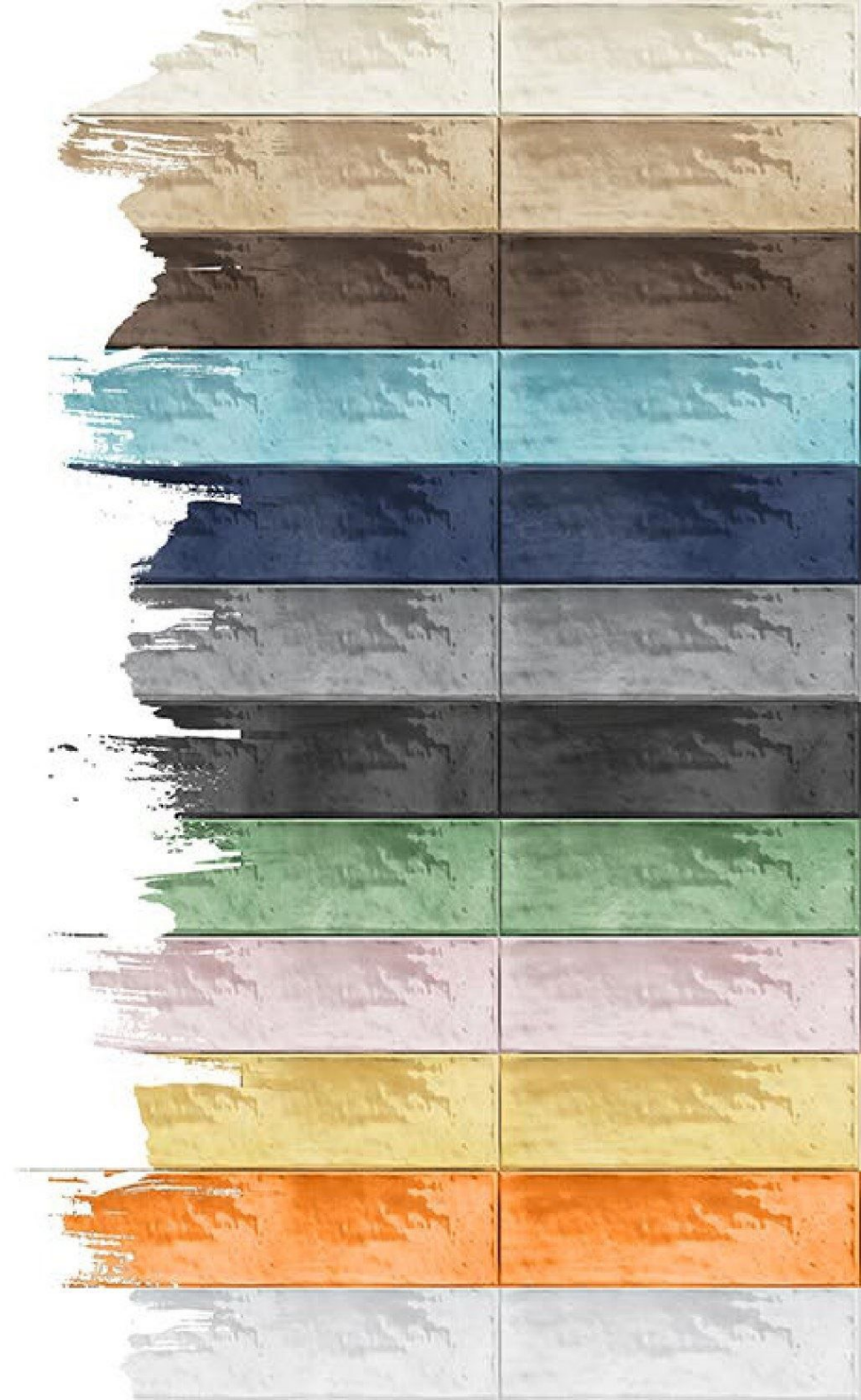
Environmental  
Authorization  
Included.



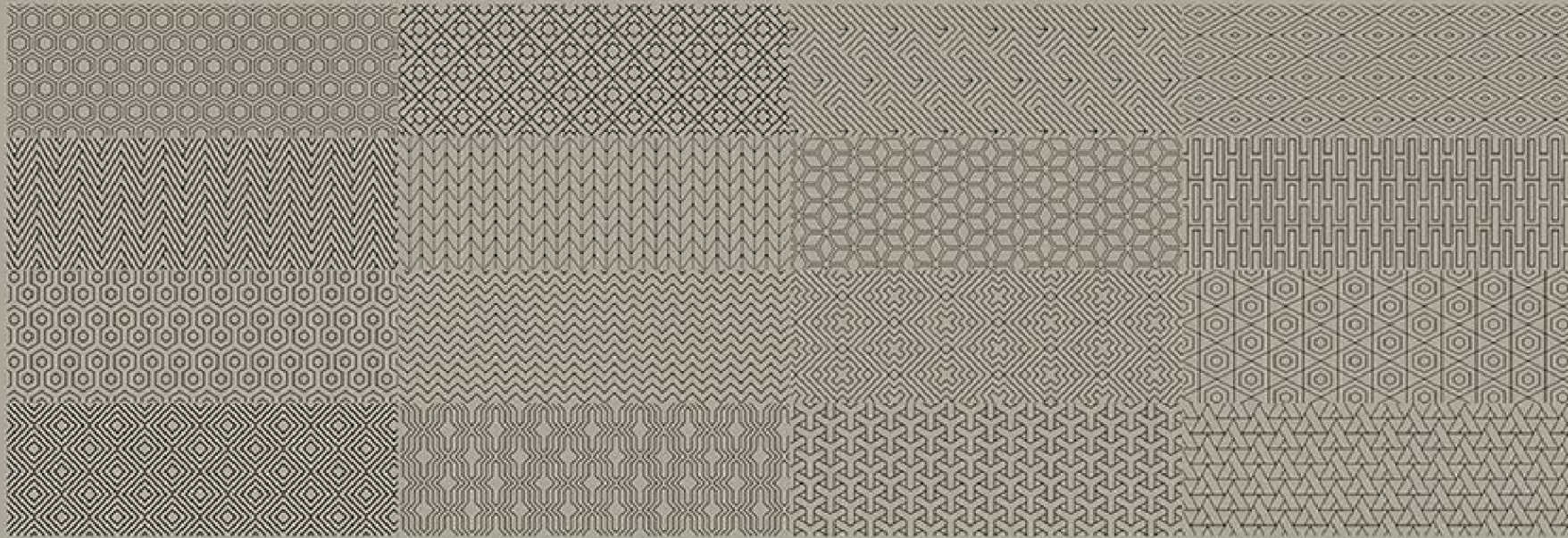


*Life is colorful*

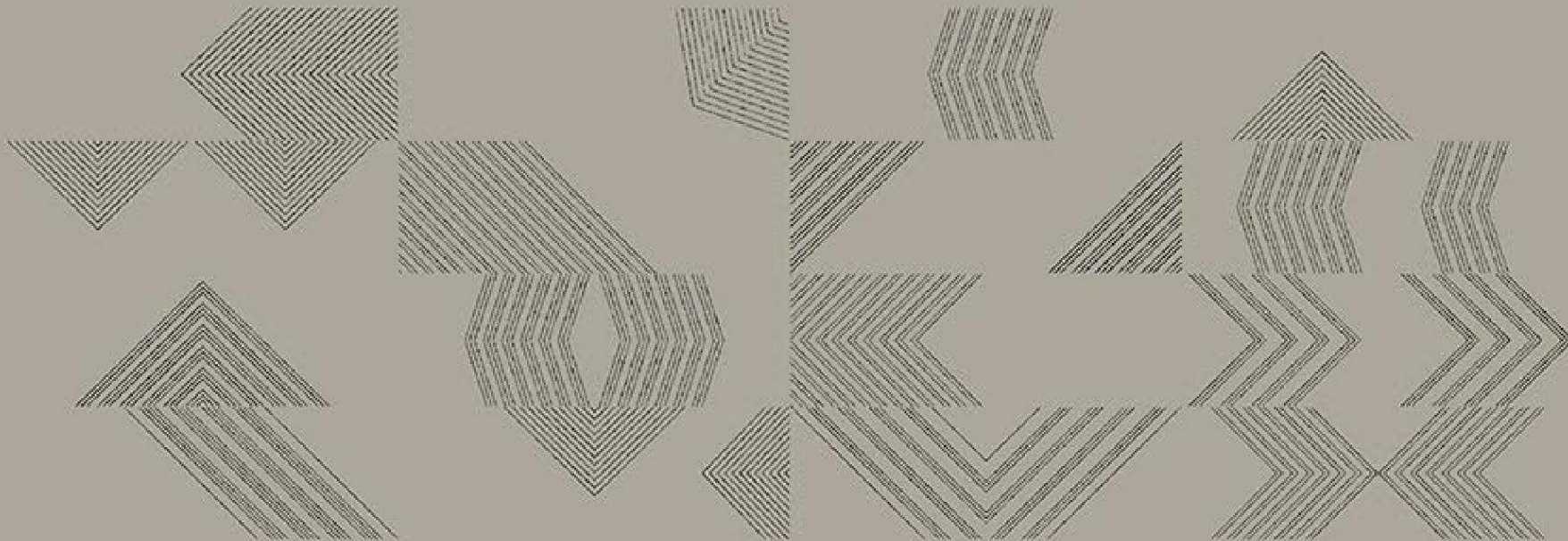
*We gradually find ourselves in a black and white world, where some things that we do are good and other things are bad. These are the first “colors” that we learn about in life. ... You will get to know the colors of love, joy, surprise, anger, sadness and fear.*



*We Give You 2 Decor Options In Rome Series,  
1 is GEO and 2nd Is ERA, You can Apply Any One Is with Any Base Color.*



**Rome GEO**



**Rome ERA**

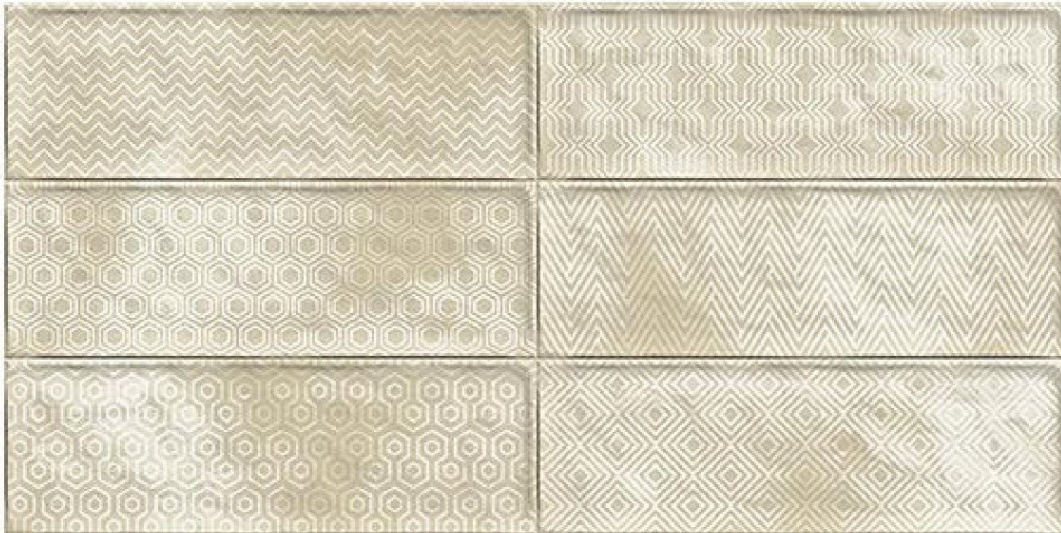
# ROME BEIGE

4" X 12"

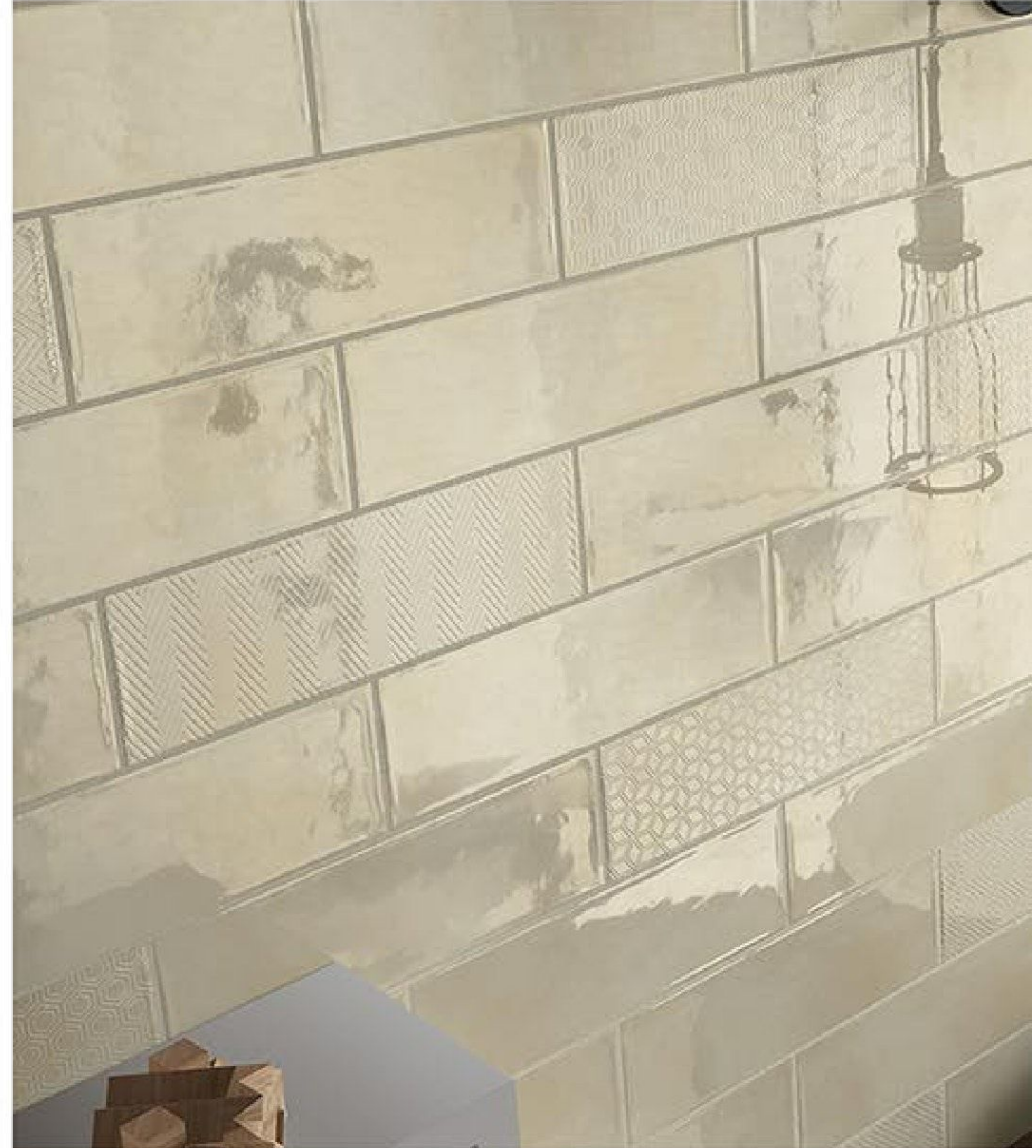
ROME BEIGE IS CHARACTERIZED BY AN ORGANIC AND NATURAL GEOMETRY THAT GIVES THE SPACE A TIMELESS CHARACTER WITH ALL THE NUANCE



ROME BEIGE



ROME BEIGE GEO





# ROME BROWN

4" X 12"

Rome brown is a natural color that evokes a sense of strength and reliability. It's often seen as solid, much like the earth, and it's a color often associated with resilience, dependability, security, and safety. Brown can also create feelings of loneliness, sadness, and isolation.

Worldwave  
International



ROME BROWN



ROME BROWN ERA







# ROME CHOCO

4" X 12"

Rome Choco is a tone of dark brown that resembles chocolate. At right is displayed the color traditionally called chocolate.



ROME CHOCO



ROME CHOCO ERA





# ROME AQUA

4" X 12"

Rome Aqua has a vibrant, striking tone, making it a wonderful accent in designs. You can combine it with other cool colors like dark grays or black, or you can pair it with warm colors like yellows or bright oranges for something that pops.

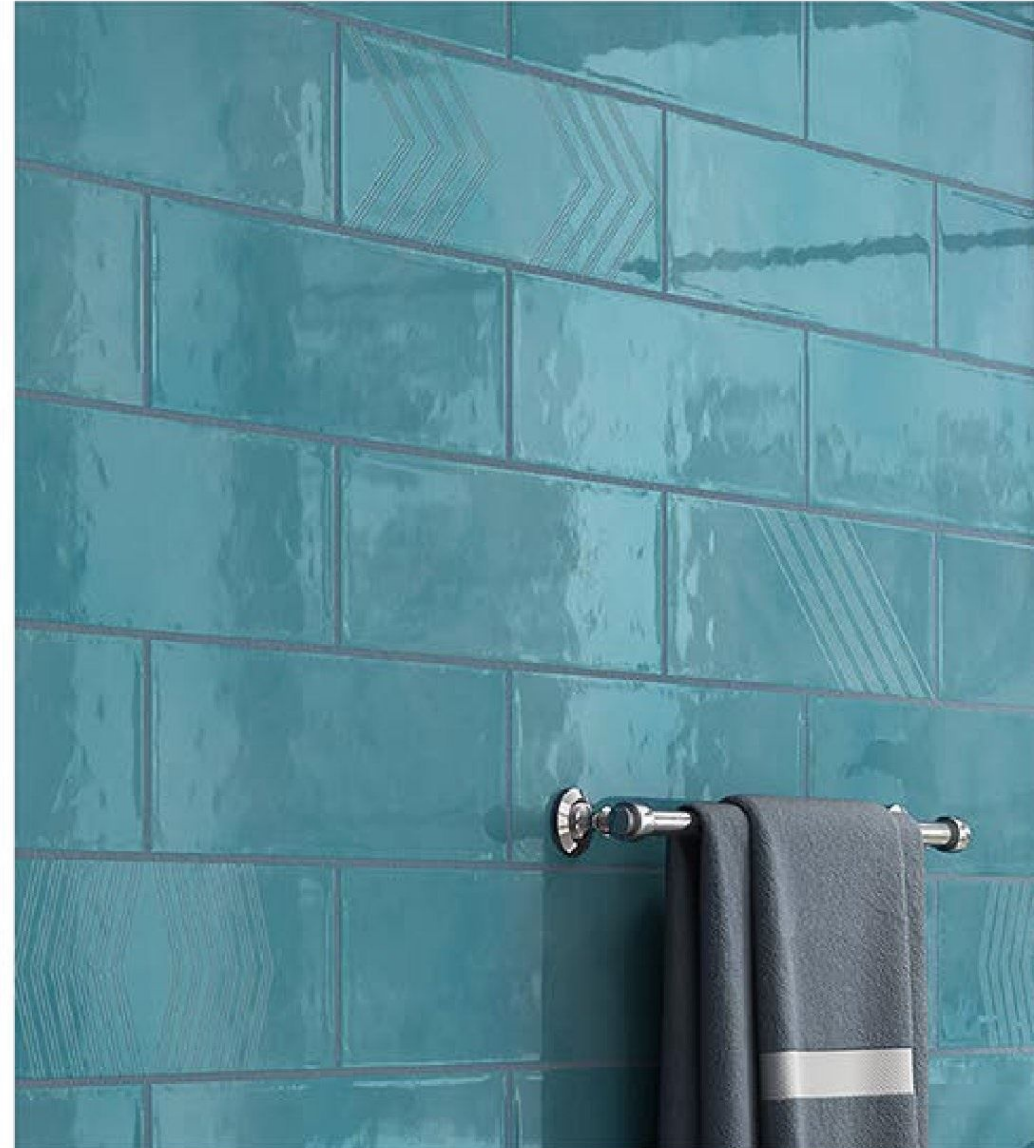
Worldwave  
International

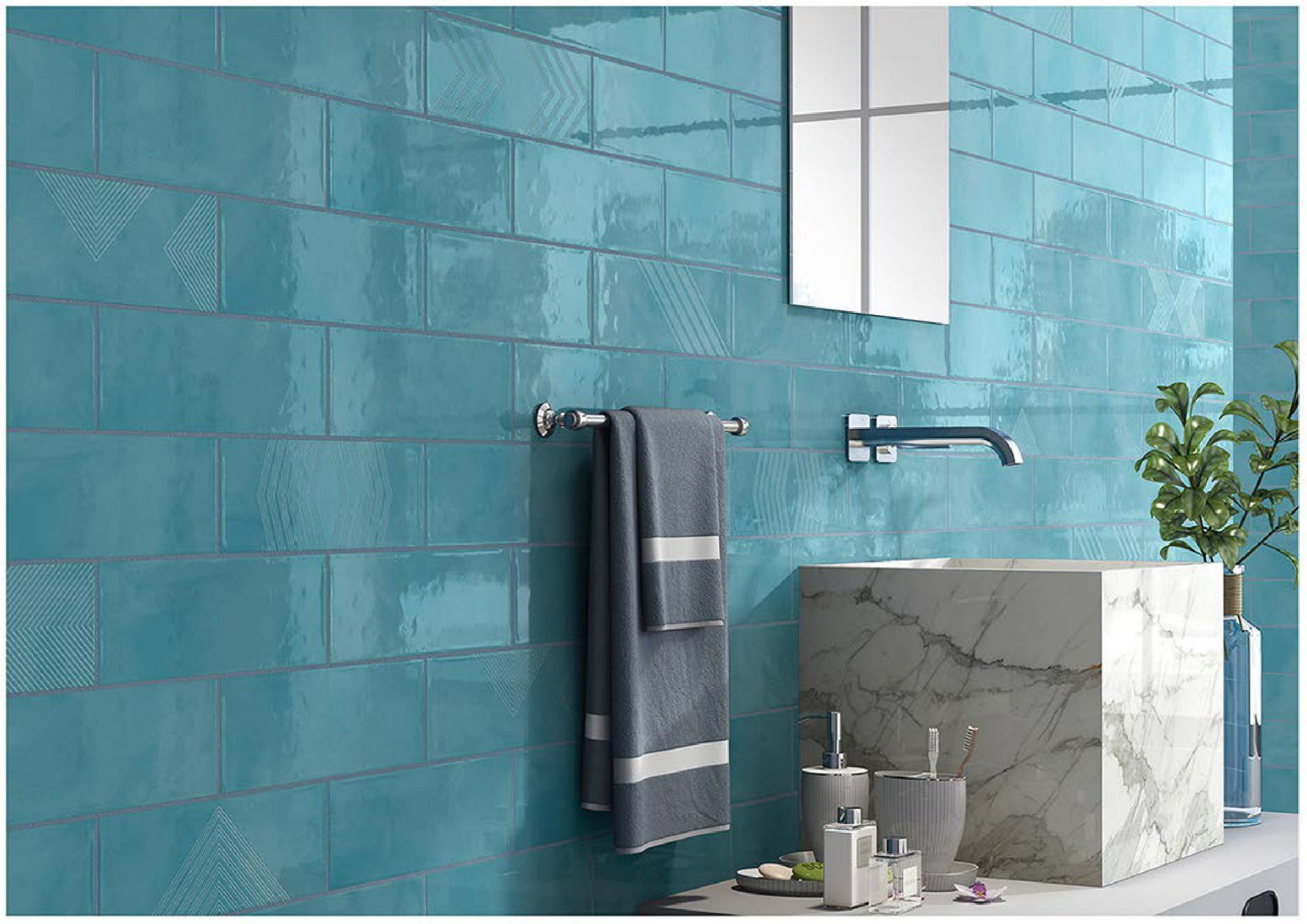


ROME AQUA



ROME AQUA ERA





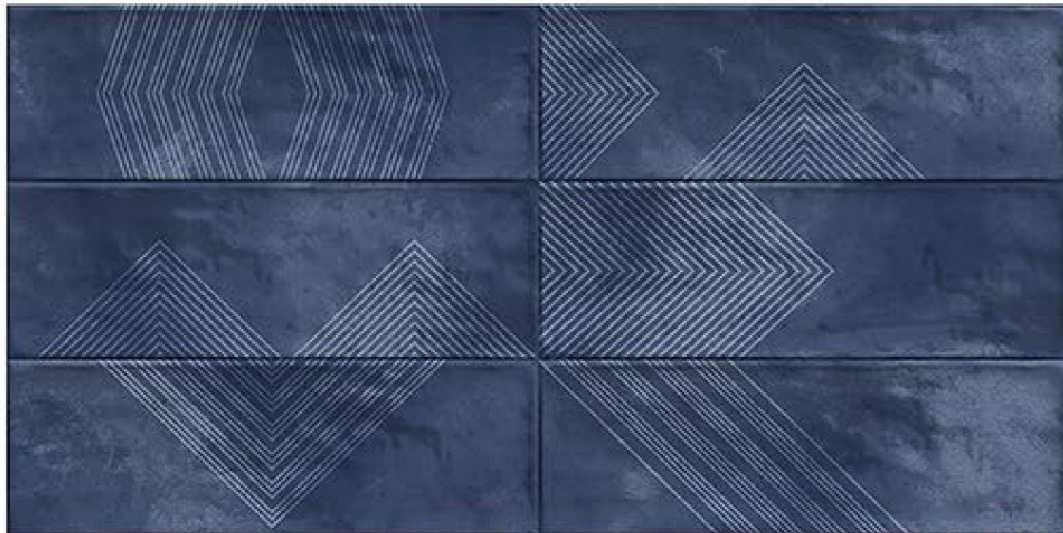
# ROME BLUE

4" X 12"

Rome Blue has more complex and contradictory meanings than any other color. These can be easily explained by pinpointing by the specific shade of blue.



ROME BLUE



ROME BLUE ERA





# ROME CHARCOL

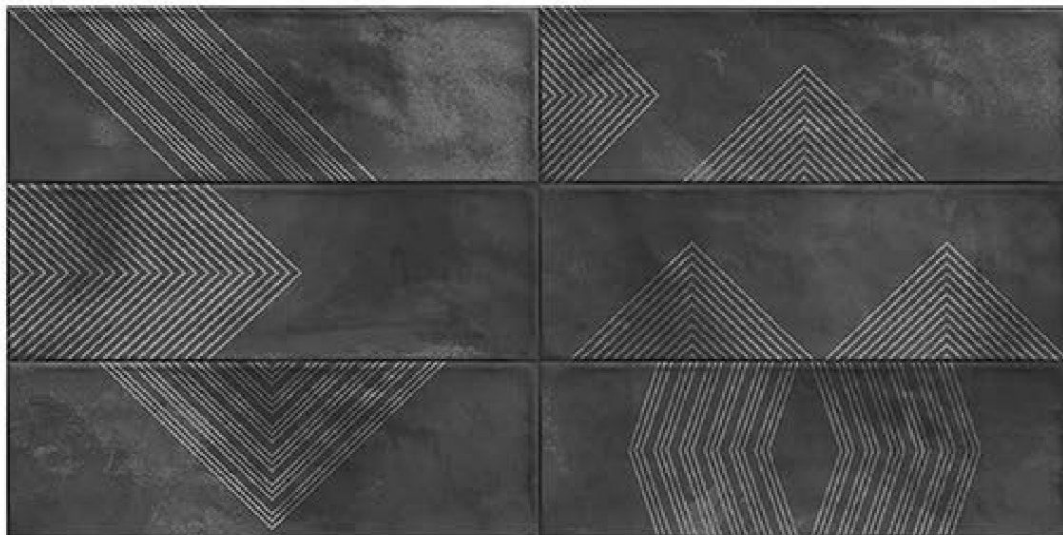
4" X 12"

Rome charcol is the color of intellect and of compromise. It's a diplomatic color, negotiating all the distance between black and white. We typically consider gray to be conservative, elegant, and cool, though it can be a bit mysterious.

Worldwave  
International

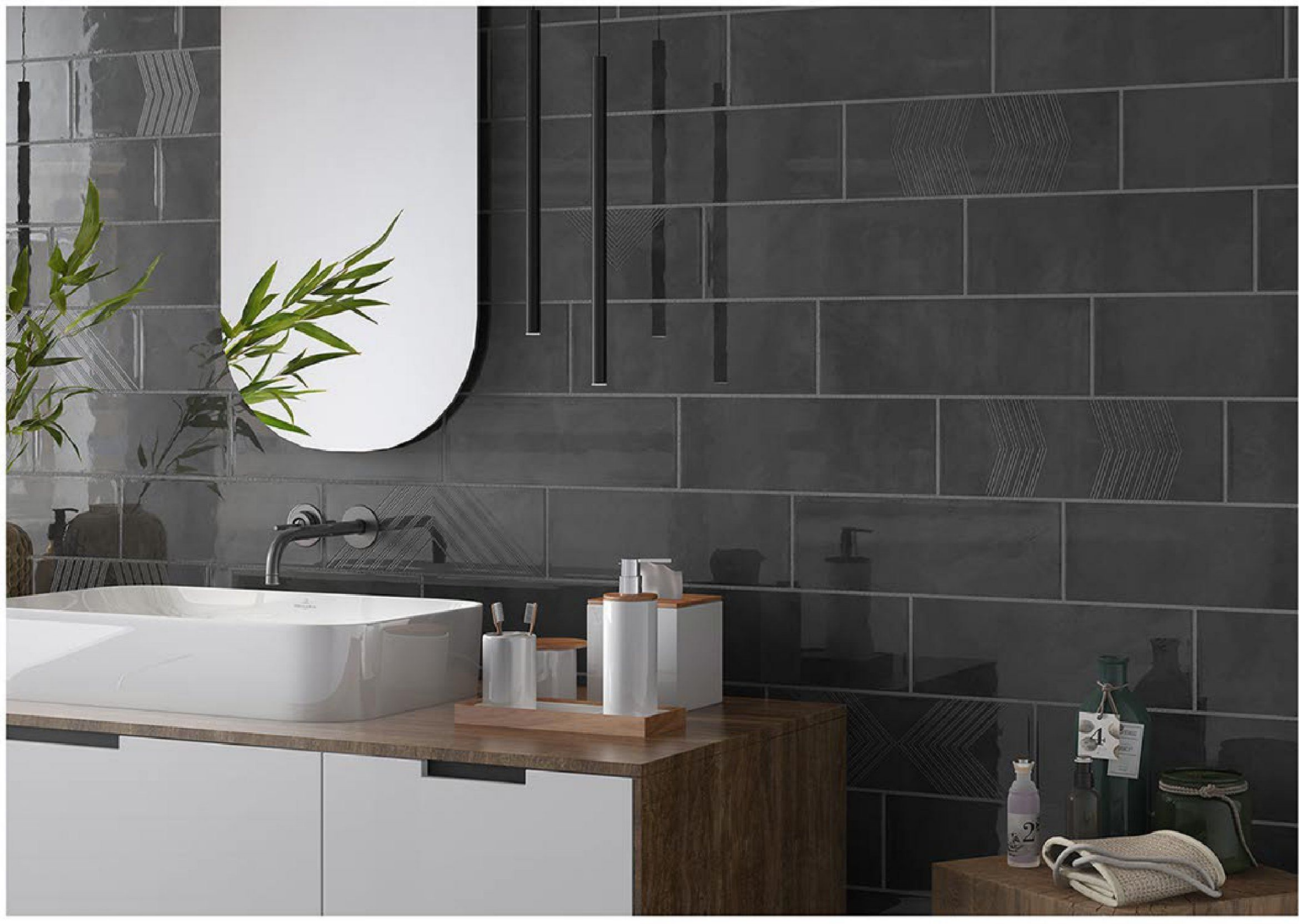


ROME CHARCOL



ROME CHARCOL ERA







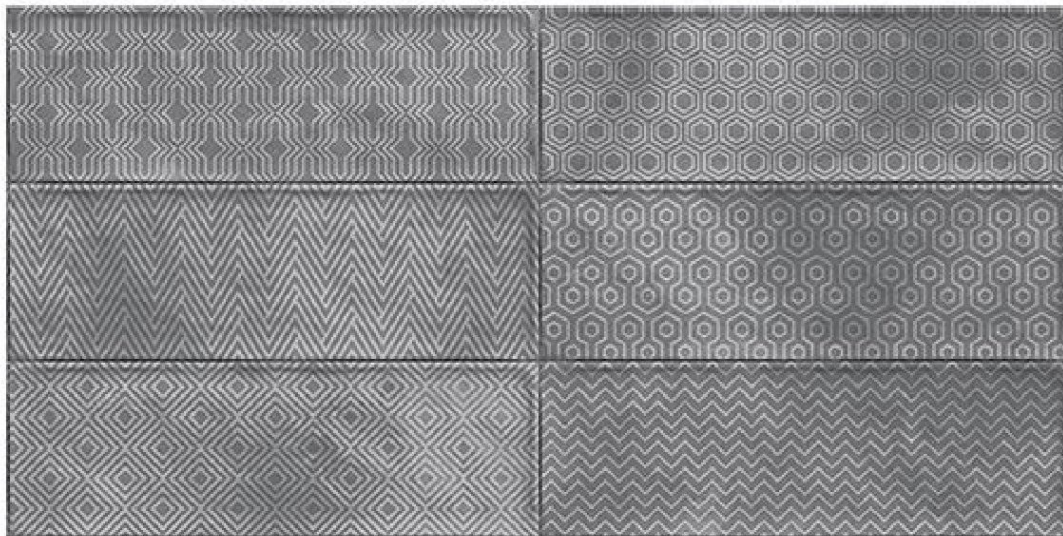
# ROME GRAY

4" X 12"

Rome grey represents neutrality and balance. Its color meaning likely comes from being the shade between white and black. However, grey does carry some negative connotations.



ROME GRAY



ROME GRAY GEO





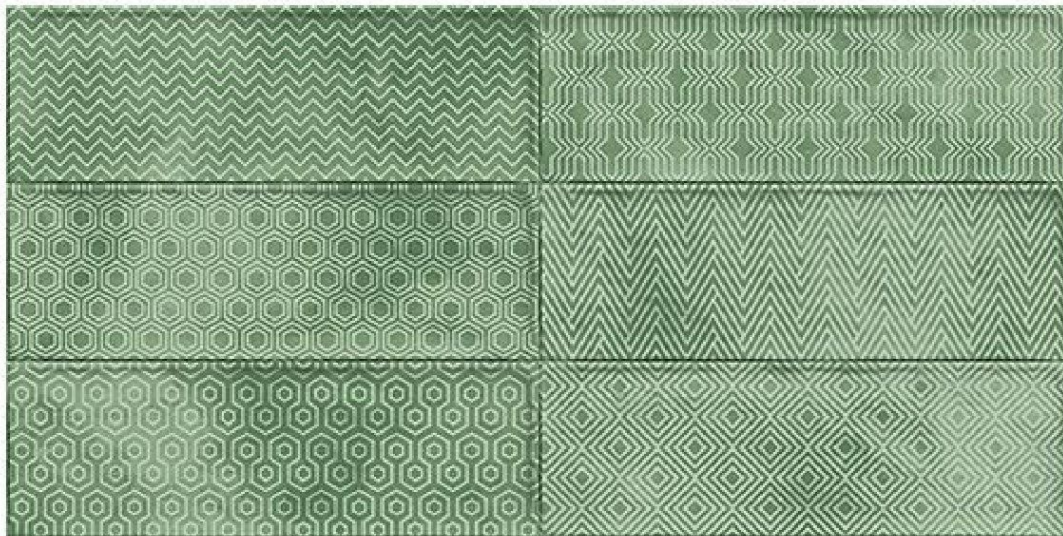
# ROME GREEN

4" X 12"

Rome Green is a cool color that symbolizes nature and the natural world. Perhaps because of its strong associations with nature, green is often thought to represent tranquility.



ROME GREEN



ROME GREEN GEO





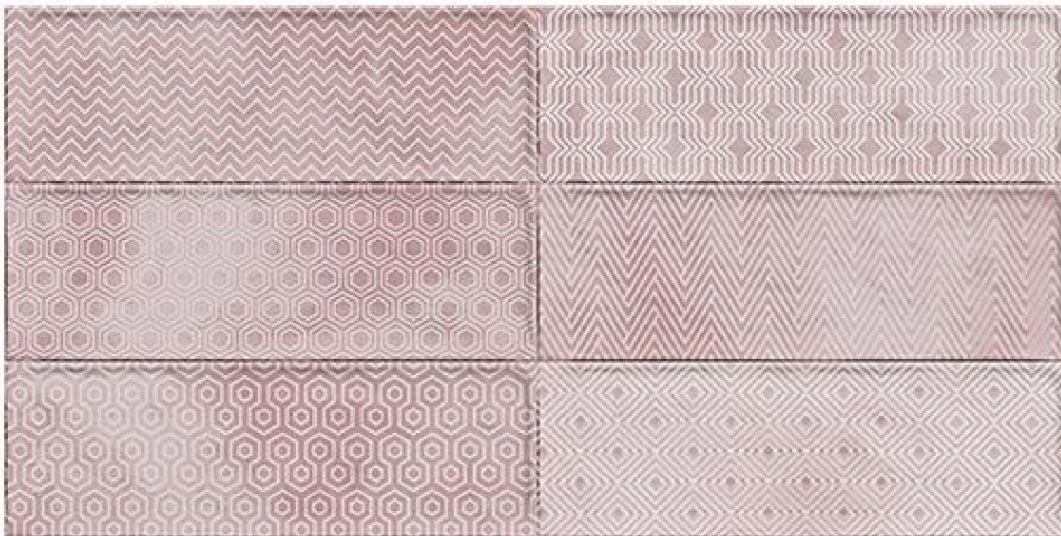
# ROME PINK

4" X 12"

Rome Pink is thought to have a calming effect. One shade known as "drunk-tank pink" is sometimes used in prisons to calm inmates.



ROME PINK



ROME PINK GEO





# ROME YELLOW

4" X 12"

Rome Yellow's positive qualities of yellow can also lead to abrasion when it is used too dramatically. While it can be attention grabbing, it can also lead to agitation in the observer. Though it appears warm and bright, yellow can lead to visual fatigue.



ROME YELLOW



ROME YELLOW ERA





A dark grey floating shelf mounted on the wall, displaying a set of white dishes with a crown logo, a glass vase, two glass bottles, and a cookbook.

Stacks of white dishes, including bowls and plates, arranged on the countertop.

A collection of clear glassware, including glasses and a pitcher, arranged on the countertop.

A stack of books, including a red one, placed on the countertop.

A wooden knife block containing several knives, positioned on the left side of the countertop.

A round wooden cutting board with a logo, resting on the countertop.

A silver thermos with a logo, standing on the countertop.

A stack of books, including one with a red cover, placed on the countertop.



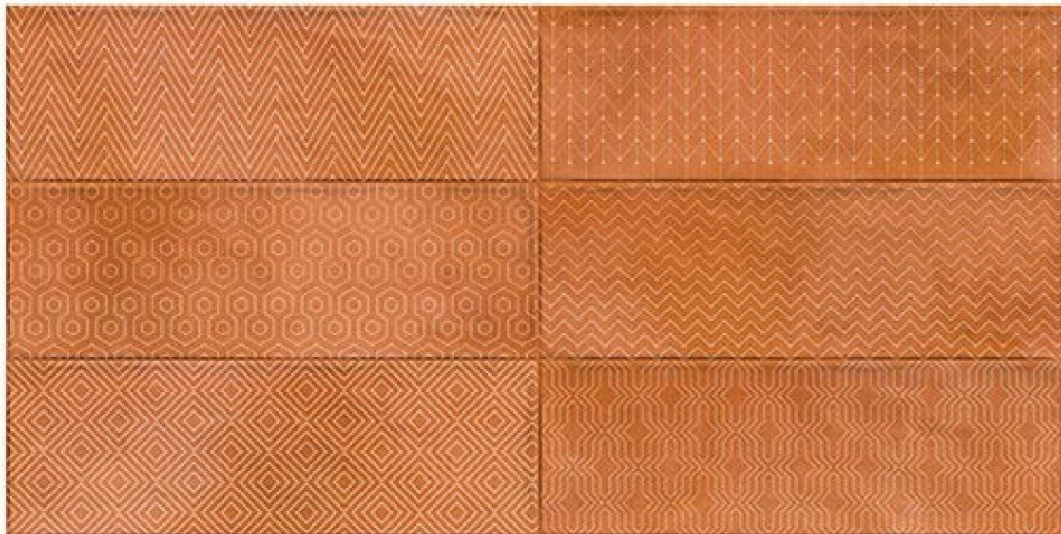
# ROME ORANGE

4" X 12"

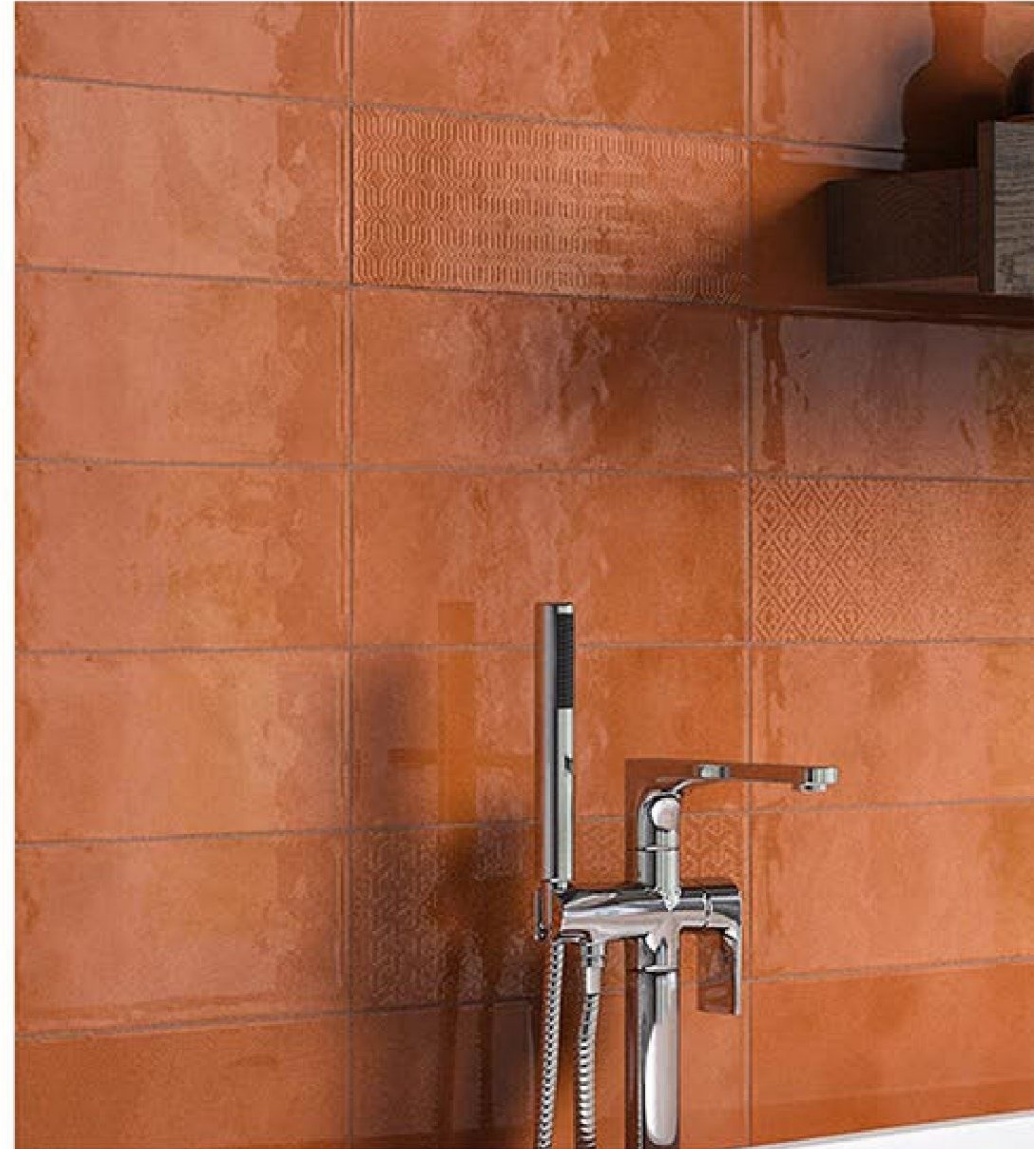
Rome Orange is a combination of yellow and red and is considered an energetic color.  
Orange calls to mind feelings of excitement, enthusiasm



ROME ORANGE



ROME ORANGE GEO





# ROME WHITE

4" X 12"

Rome White is purity, innocence, wholeness and completion ... The color white is color at its most complete and pure, the color of perfection.



ROME WHITE



ROME WHITE ERA







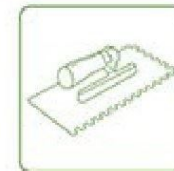
## SMART SOLUTION FOR RENOVATIONS

SOLUZIONI INTELLIGENTI PER LA RISTRUTTURAZIONE



### IDEAL FOR RENOVATIONS

Ideal for renovations  
Thickness of glue and site less than 1 cm



### EASY AND FAST TO INSTALL

Easy to install  
Save 33% of installation time



### ULTRA LIGHTWEIGHT MATERIAL

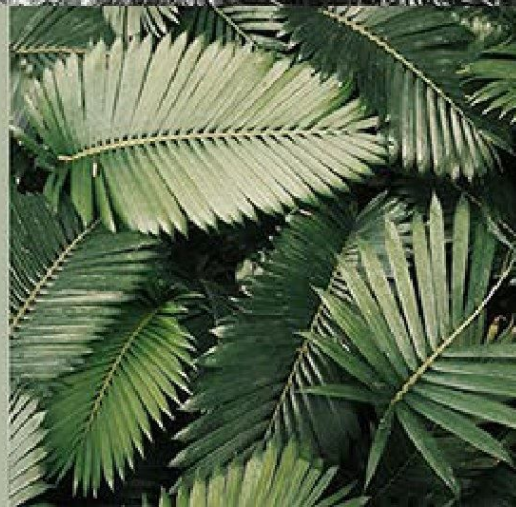
Ultralight material  
40% weight reduction



### GREATER ENVIRONMENTAL SUSTAINABILITY

Highly eco-friendly  
The efficient use of raw materials reduces the CO2 emissions.

Environmental  
Authorization  
Included.



Packing	Size/mm	Pc/Box	Kg/Box	Coverage area
Rome	100 x 300	33	13.50 approx	10.76sq.ft/ 0.99sq.mtr